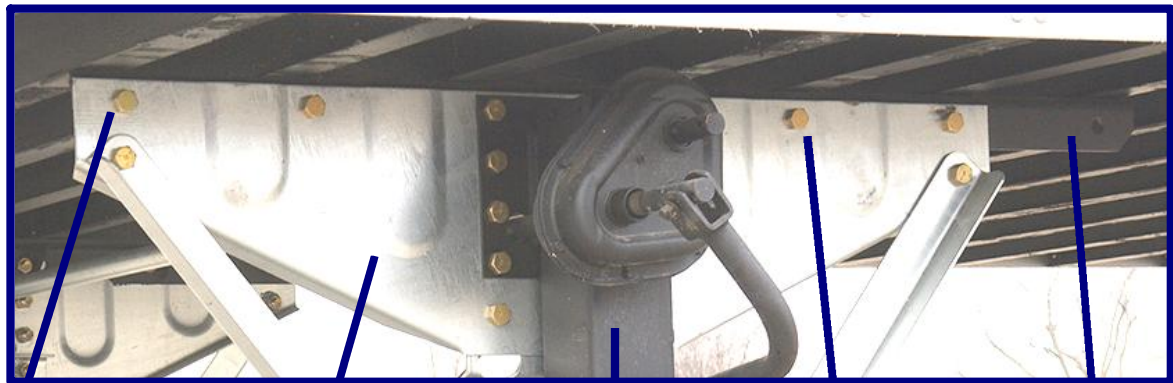


PRODUCT BULLETIN

Continuing the effort to upgrade the Vanguard brand and to maximize customer benefits while reducing customer costs, Vanguard National Trailer has revised the “standard” landing gear assembly to better service the industry. Customer benefits include:

- Crossmembers over the landing gear on 9” centers.
- Landing gear assembly adjustable 9” for more clearance and acceptable for both 36” and 42” kingpins.
- (7) Crossmembers located over the landing gear mounting angles.
- Symmetrical galvanized wing plate for longer life and one part number can be utilized both RS and CS.
- Symmetrical galvanized brackets for longer life and one part number that can be utilized both RS & CS and Front and Aft.
- Holland 51,000 landing gear standard with Black Armor coating.
- Bolt-on design utilizing Grade 5 bolts and nuts/4000 hour salt spray.



Galvanized symmetrical bracing, can be used RS or CS and both front and aft

Holland 51,000 landing gear with the industry leading Armor coating.

Landing gear mounting angle spanning 7 crossmembers.

Galvanized symmetrical wing plate that can be utilized both RS and CS, spans 6 crossmembers.

Grade 5 bolts & nuts approved to > 4000 hours salt spray.